



THE RETREAT

BASHUNDHARA R/A



AT A glance



PLOT # 504,505 & 515
ROAD # 10 & 11, BLOCK # E



BUILT OVER
9 KATHA



1868-2221 SFT
APARTMENTS



NUMBER OF
FLOORS: G+8



1 HIGH QUALITY
STRETCHER LIFT



3 & 4-BEDROOM
HOMES



RAJUK APPROVAL NO:
25.39.0000.106.33.1182.21



THE RETREAT

Welcome to a contemporary lifestyle



CONVENIENCES nearby

The Retreat is at close proximity to Madani Avenue and subsequently Gulshan as well.

Educational Institutions

PLAYPEN SCHOOL
INTERNATIONAL SCHOOL DHAKA (ISD)
NORTH SOUTH UNIVERSITY
INDEPENDENT UNIVERSITY
AMERICAN INTERNATIONAL UNIVERSITY

Shopping Malls

JAMUNA FUTURE PARK
RUPAYAN SHOPPING SQUARE

Grocery

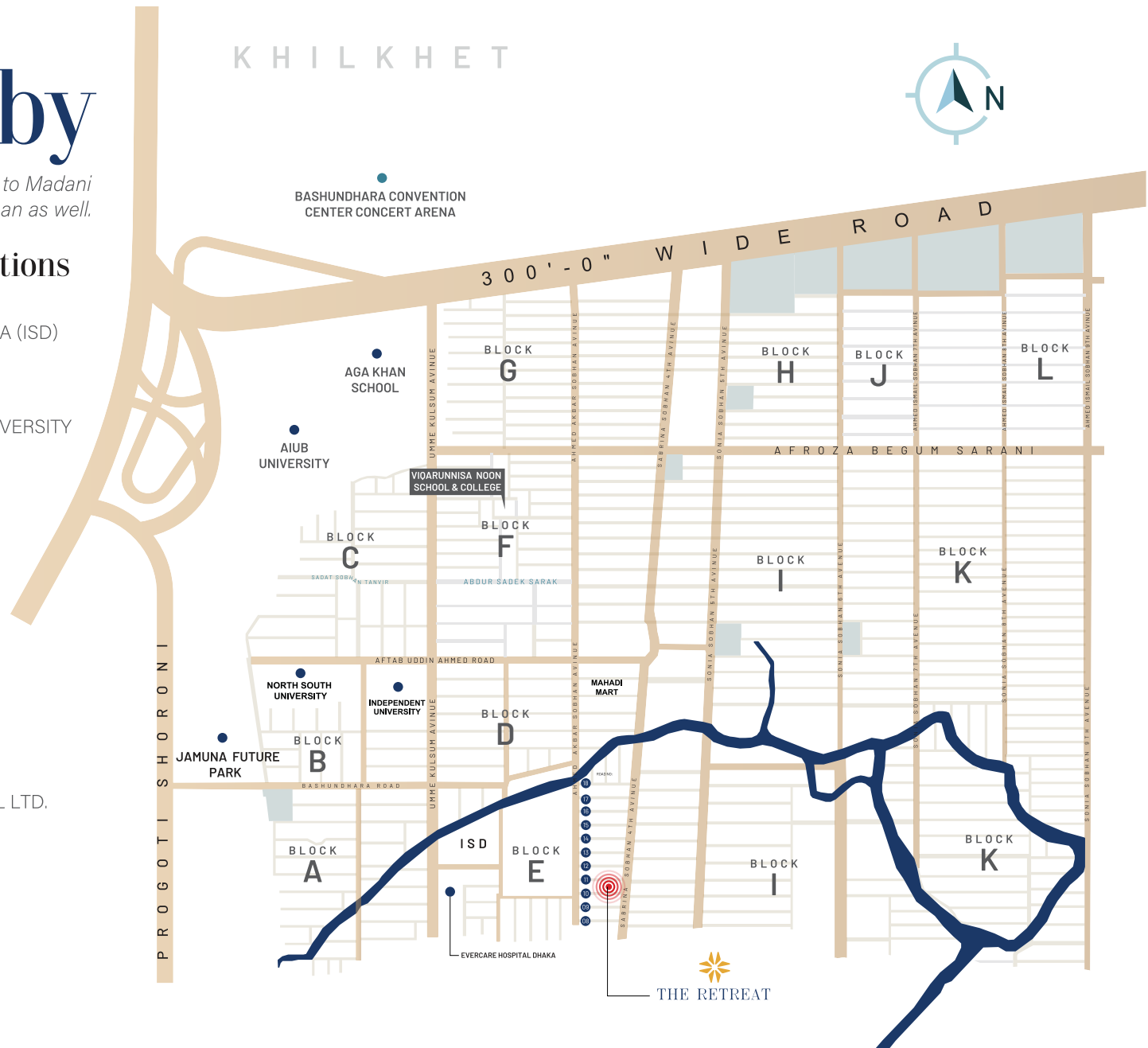
MEHEDI MART
BAZAR SHARABELA
SHWAPNO

Hospitals

EVERCARE HOSPITAL DHAKA
BARIDHARA GENERAL HOSPITAL LTD.

Convention Center

BICC





The stylish outlook has been perfected with a combination of cladding, groove, glass, and paint with hints of greenery, which makes The Retreat the most classy home in the neighborhood. The well-designed boundary well, concierge with intercom facilities and CCTV surveillance ensures entrance security. A semi-double height entrance adds splendor to this look, and includes a community hall & prayer room. Driver's waiting area and caretaker room are also available on the ground floor.





THE RETREAT

PARKING



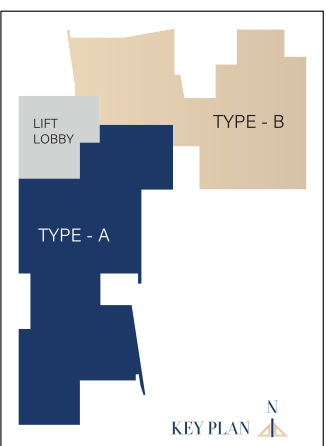
1ST FLOOR PLAN

- COMMUNITY HALL
- PRAYER AREA
- GREEN AREA

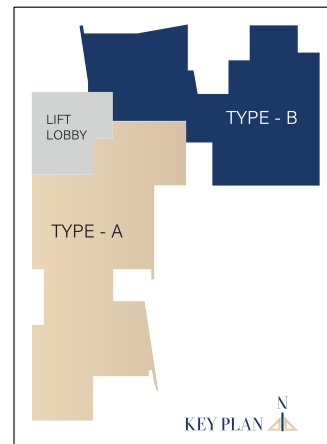
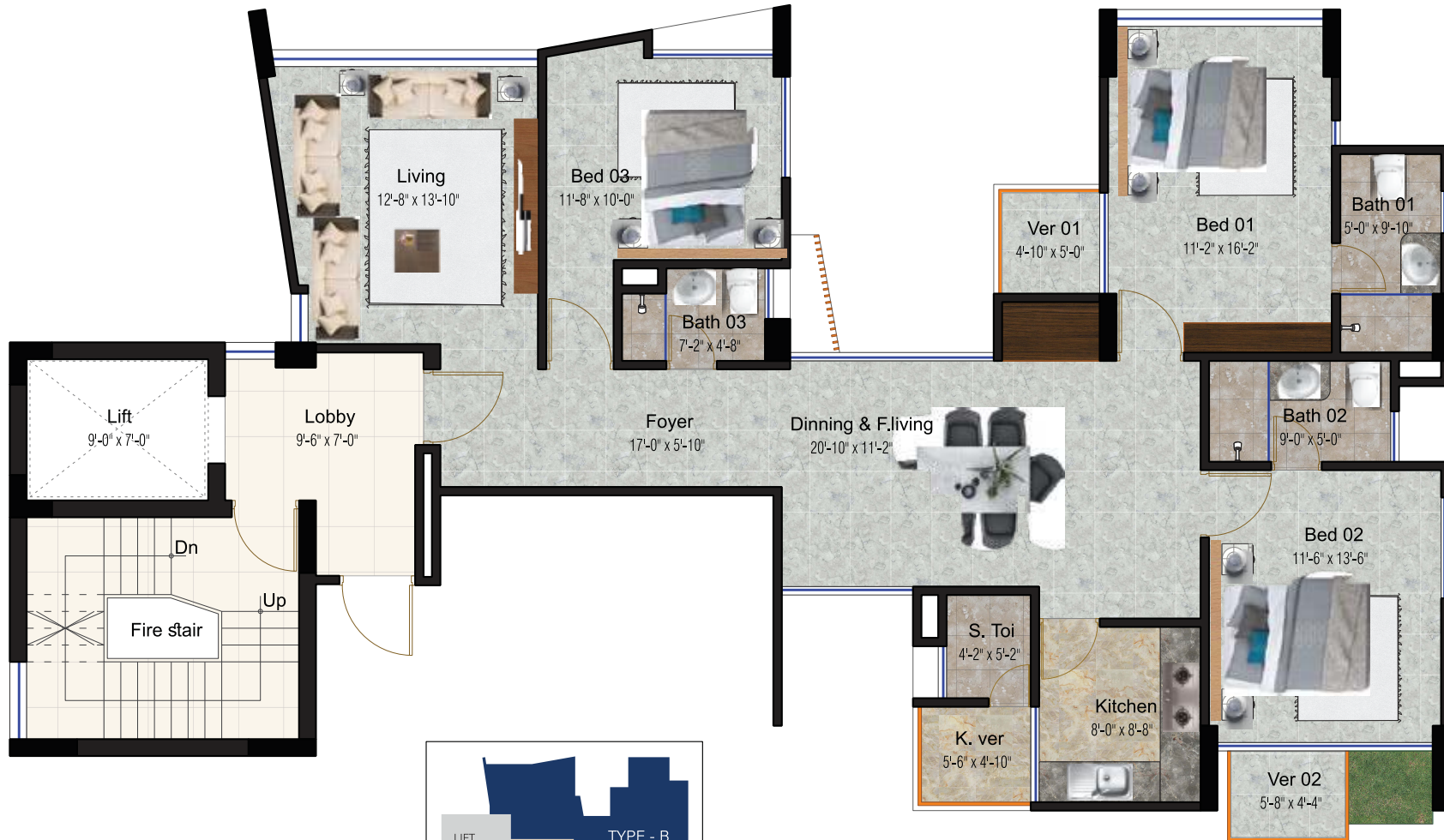




COMMUNITY HALL

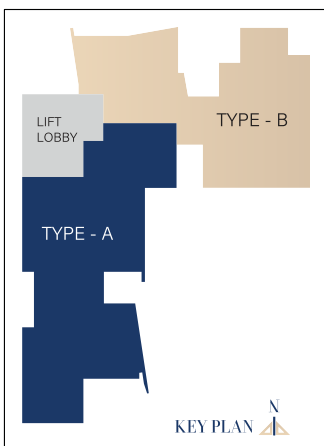


TYPE-A : 2221 SFT
2ND, 5TH, & 6TH FLOOR PLAN

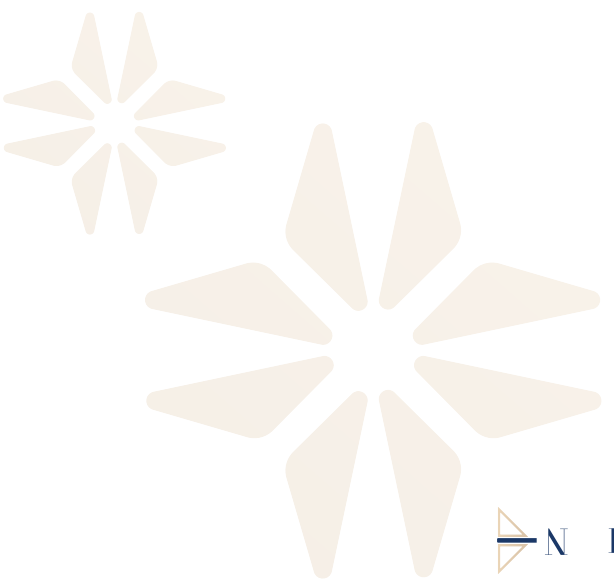


TYPE-B : 1868 SFT
2ND FLOOR PLAN





 **TYPE-A : 2221 SFT**
3RD, 4TH, 7TH & 8TH FLOOR PLAN





Rooftop

FEATURES

- Designed landscaped rooftop.
- BBQ area with portable BBQ table.
- Lime terracing of adequate thickness for protection from heat.
- Protective parapet wall/ railing 4'-0" high around the periphery.
- Separated clothes drying area with lines for drying laundry.





ENJOY THE GREENERY
& OPEN SKY IN THE ROOFTOP

Apartment



FEATURES

Floors:	24"x24" mirror polished imported tiles in foyer, bedrooms, living room, family lounge, dining room & all Verandahs. Kitchen verandah with non-slip tiles matched to the floor scheme.
Main door:	Solid Chittagong Teak 3'-9"x 7' main entrance door with door chain, door handle with Smart fingerprint access door lock, one look-over camera and 2-way voice support function.
Internal doors:	7' high French polished veneer door shutters with Teak Chamble door frame for all internal doors except bathrooms.
Basin Provision:	Provision for basin at the dining area.
Sliding doors & windows:	Wider sliding glass windows and doors used as per floor plan, complete with mohair lining, rainwater barrier, and fly-proof netting
Security and safety:	Safety grills on windows & full height grill on kitchen verandahs.
Painting:	Smooth finished plastic paint on all internal walls & ceilings.
Electrical:	Imported gang type electrical switches, plug points, and other fittings. Provision for air conditioners with power points in all beds, living room, dining & family lounge area as per Electrical Design. Internet connection point in family lounge/dining area. Staff calling bell switch in Master bedroom. Remote control light and fan switch in living room, dining and family lounge.

Lights:	Provision for wall brackets in all bedrooms, dining room, living room, family lounge area and common area. Appropriate lighting in bathrooms, kitchen, staff's bed & verandahs
Cable connections:	Concealed television line in all bedrooms & Family lounge.

Bathroom features:

Door:	Laminated door shutter with Teak Chamble solid door frames.
Sanitary ware:	Imported sanitary ware.
C.P fittings & accessories:	C. P fittings and accessories made-in-Bangladesh
Shower area:	Customized shower area with curtain rail in all bathrooms.
Tiles:	Wall and floor tiles made-in-Bangladesh.
Counter tops & basins:	Marble countertop Imported cabinet basin in Master bathroom, other bathrooms will have imported pedestal basin as per developer's choice .Mirrors in all bathrooms.
Waterline:	Concealed Hot & Cold waterlines in all bathrooms including staff bath.
Staff bathroom:	Wall, floor tiles, sanitary ware & C.P fittings all made-in-Bangladesh.

Kitchen Features:

Platform:	Granite in the kitchen countertop.
Wall & floor tiles:	Wall tiles (up to 7") and floor tiles made in Bangladesh.
Waterline:	Concealed Hot & Cold waterline.
Sink:	Single bowl sink.
Gas connection & detector:	LPG connection for oven/stove with gas leakage detector to prevent all fire hazards.



Lift, Lobbies & Staircases:

- 1-High Quality Stretcher lift. The lifts will be from a reputed international manufacturer as per Developer's choice to be installed with Auto Voltage regulator, Inverter, adequate lighting, full-height photocell sensor and emergency alarm
- Lifts to have Plasma Air inside lift cabin.
- Tiled staircase for easy maintenance and a clean look.
- Tiled floors with attractively designed lift walls will complete the elegant look of lift lobbies on every floor.
- Sliding window in stair landing to ensure light and ventilation.

Generator:

- An emergency auto start/stop canopied generator imported from Europe as per the developer's choice.
- Support lift, water pump and lighting in common space and stairs. Single light and fan point in every room (including staff bed), single light point in the kitchen and all bathrooms. A point for refrigerator and a point for television.

Water:

- Underground water reservoir with lifting pump to store two days consumption capacity.
- An overhead water tank above the rooftop with capacity to serve half-day requirements.
- An emergency water pump.

NOTE: Additional fittings and fixtures (according to customers' choice) will be done at an additional cost. Kitchen cabinets and built-in wardrobes can be ordered separately at an additional cost. Interior design consultation is also available for a cost.

Structural & General Engineering Features

- Structurally strong building design based on ACI/BNBC/ASTM to withstand 210 km/hr winds and earthquake resistance as per BNBC.
- Machine made concrete block or solid bricks and damp treated salinity proof as per developer's choice to be used.
- All structural materials including steel, cement, bricks, Sylhet sand and other aggregates etc. screened for quality including laboratory testing.
- Systematic testing in quality control laboratories of concrete and other completed work samples, at every stage.

LIVE CAREFREE IN A bti APARTMENT

- We provide fire-protected doors, fire hydrants, fire alarms & fire extinguishers to mitigate any chance of fire damage.
- An earthquake-resistant design by a team of experienced and qualified civil engineers to ensure the highest quality of workmanship and safety.
- The structural strength of our building materials is checked in quality-controlled labs at every stage of construction.
- Our unparalleled customer service focuses on fulfilling all commitments on time, to ensure our customers are more than just happy with us.





THE RETREAT





FOR YOUR DREAM LIVING SPACE,
AS SPLENDID AS THIS, CONTACT US AT





YOUR BEDROOM CAN BE AS SUAVE
AS THIS. TO KNOW MORE, CONTACT US AT





WANT A MODERN,
CLASSY DINING ROOM?
DESIGN WITH





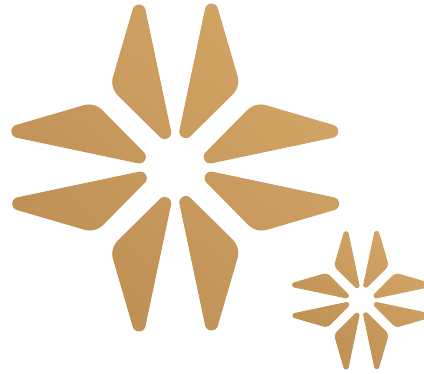
YOU TOO CAN HAVE A STYLISH KITCHEN.
CONTACT US AT





GET SPLENDIDLY
DESIGNED BATHROOMS.
KNOCK US AT





LET BTI WORK WITH YOU REGARDING ALL REAL ESTATE PROPERTY RELATED SERVICES

bti has added to its portfolio a number of business services in many aspects of the real estate market and beyond. These business services have been created not only to serve the bti customers but also serve those who believe in our reputation as a company well-known for its business ethics and expertise that has been carefully built up through 4 decades of serving customers.





...SINCE 1984

btibd.com | ☎ 16604

or whatsapp +880 1313 401 405

DHAKA OFFICE:

bti Celebration Point
Plot: 3 & 5, Road: 113/A,
Gulshan, Dhaka 1212
Email: info@btibd.org

CHATTOGRAM OFFICE:

bti Landmark
549/646, Zakir Hossain Road
Wireless More, West Khulshi,
Chattogram.
Email: info_ctg@btibd.org

General Disclaimer:

Information contained in this brochure is subject to change. The measurements are approximate. Illustrations provided are only to facilitate presentation. Apartments are sold unfurnished. Furniture and fixtures are not part of the offer or contract. Features and amenities may vary as per availability based on market prices/design requirement/price fluctuation.